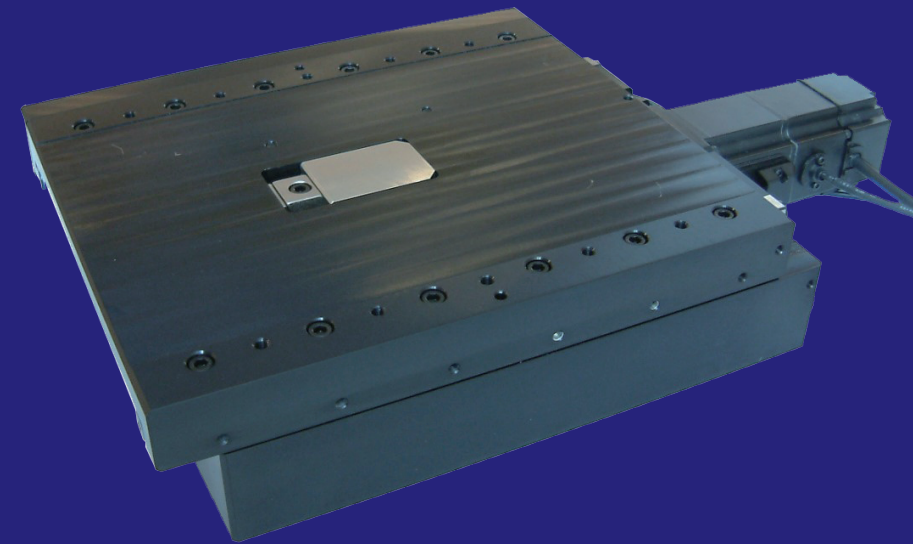


XRB 250 Series



Ball-screw drive with servo motor



High precision anti-creep cross roller

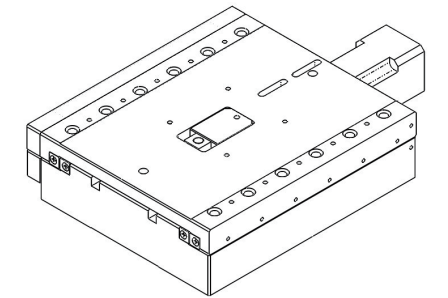


Option of linear encoder

XRB250

Specifications

- Ball-screw drive with servo motor
- Precision ground screw
- High precision anti-creep cross roller
- Option of linear encoder



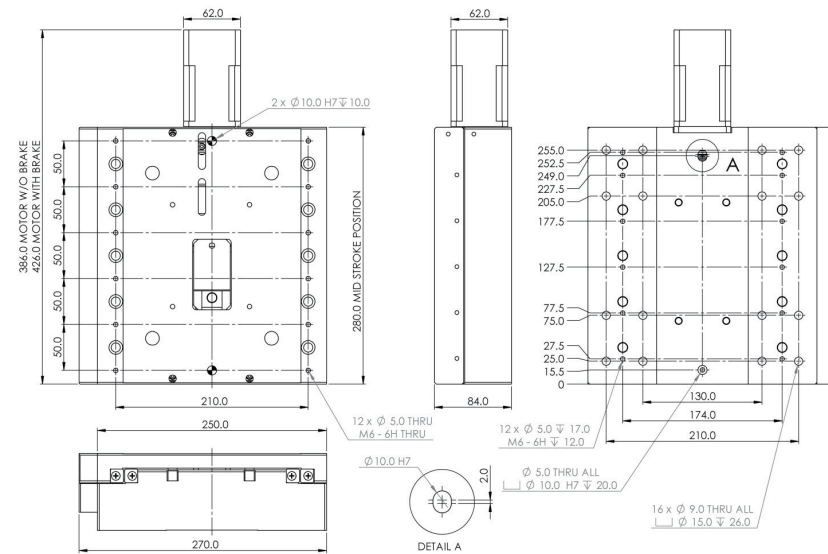
XRB250

Motor Size	Rated Torque (Nm)	Peak Torque (Nm)	Rated Speed (rpm)	Maximum Speed (rpm)	Motor Length L(mm)	Type	Remarks
M60-1	0.318	0.955	3000	5000	92	Servo	w/o brake
M60-2	0.637	1.912			106		
M60-4	1.274	3.822			134		
M60-1-B	0.318	0.955			132		With brake
M60-2-B	0.637	1.912			146		
M60-4-B	1.274	3.822			174		

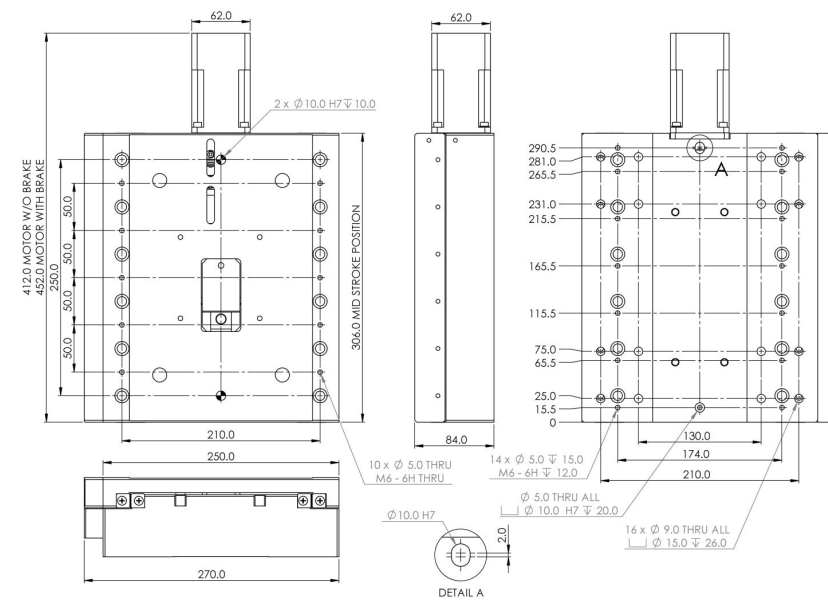
XRB250

Dimensions

XRB250-50



XRB250-100



XRB250

Bearing Parameters/Performance Parameter

Description	Unit	Specs
XRB250-50		
Maximum bearing load	N	3750
Recommended roll moment	Nm	716
Recommended pitch moment	Nm	592
Recommended yaw moment	Nm	592
XRB250-100		
Maximum bearing load	N	5010
Recommended roll moment	Nm	956
Recommended pitch moment	Nm	901
Recommended yaw moment	Nm	901
XRB250-160		
Maximum bearing load	N	5630
Recommended roll moment	Nm	1075
Recommended pitch moment	Nm	1294
Recommended yaw moment	Nm	1294

Specifications	Unit	
Straightness ^①	μm	±1μm/25mm
Flatness ^①		±1μm/25mm
Bidirectional Repeatability		±2 counts

① All servo motors are supplied with 2500 lines incremental rotary encoder.

XRB250

Part Numbering

XRB250-M60-2-B-100-2-R10-1.0

Model
XRB250

Motor (type)
M60-1,2,4¹
M60-1-B,2-B,4-B
M60-S8,S16

Effective Stroke (mm)
50,100,160

Resolution (um)
0.1,1.0,5.0

Encoder Option (type)
R22,R41,R10³

Ballscrew Pitch (mm)
2²

- 1 All servo motors are supplied with 2500 lines incremental rotary encoder.
- 2 For another ball-screw pitch, please contact us.
- 3 Available for 1 um only.