

# PRODUCTS

The *Motion Coordinator* system is extremely modular, allowing the user to tailor the controller to their specific applications, this also allows the flexibility to incorporate new modules if the need should change, making the system “future proof”. Systems may be used with a stand alone program or alternatively commands can be sent from an external computer.

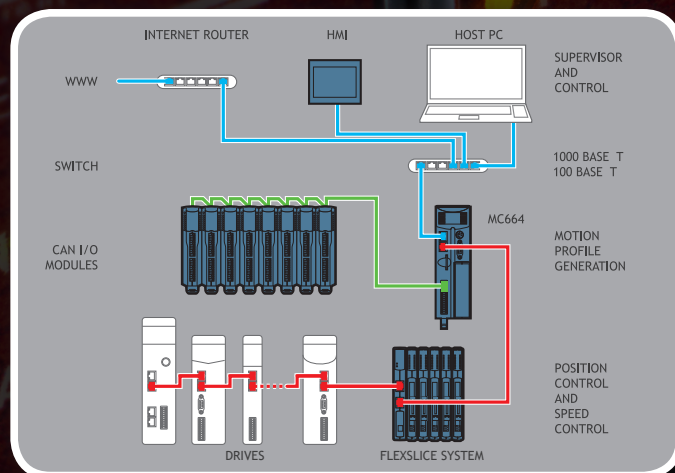
All *Motion Coordinators*, whether panel mount, rack mount, DIN-rail mount or a custom design format, allow digital or analogue I/O expansion with Trio's I/O modules. Special I/O requirements can also be accommodated using the CANopen protocol to control third party I/O modules. The Flexslice System offers fast high performance EtherCAT devices for Trio's range of EtherCAT *Motion Coordinators*.

Trio's UNIPLAY range of operator interfaces provide a robust and functional HMI using the Ethernet network. Third party HMI products, touchscreens, etc. can communicate to the *Motion Coordinator* via the Modbus-RTU serial protocol.

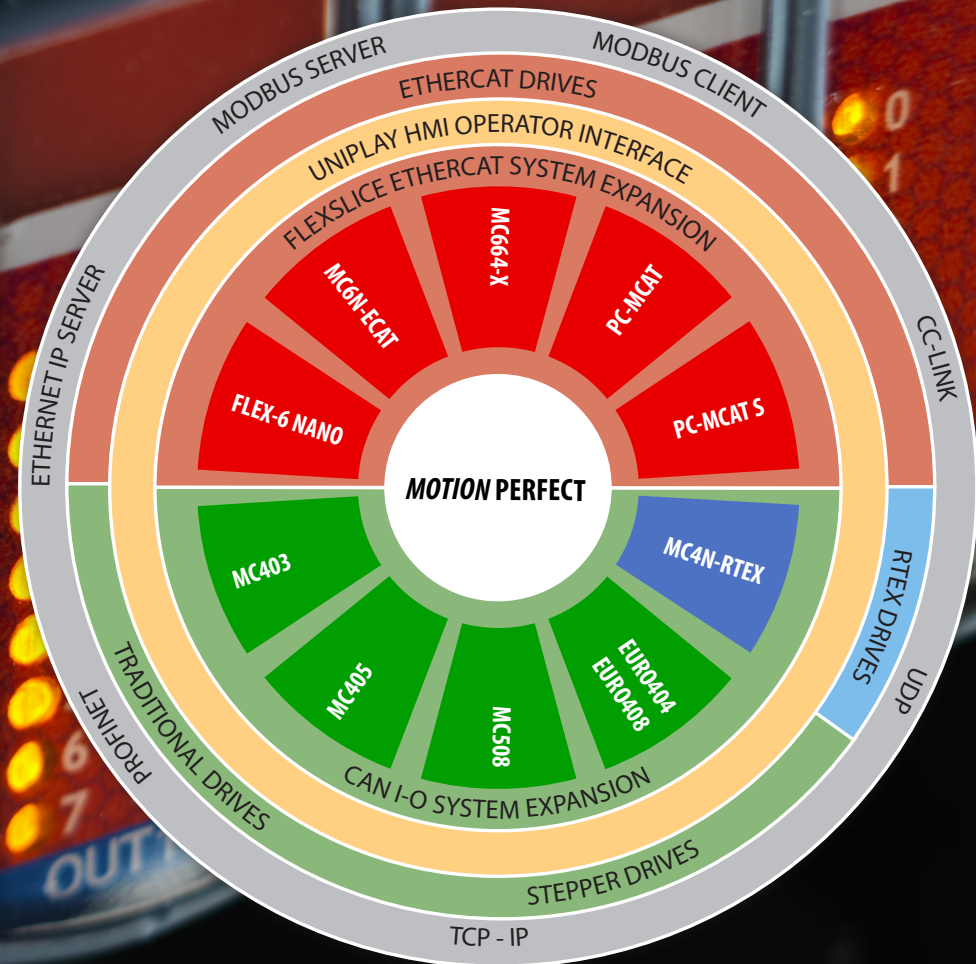
## System Set-Up

The MC4/5/6 range includes advanced networking technology for connection to Digital Servos, CANbus and Factory Networks. Access to all parts of the system by network connections allows reduced down-time with automated fault reporting and analysis.

With a MC664 *Motion Coordinator*, it is possible to control a machine with up to 128 axes (64 stepper/servo and 64 virtual), 1024 digital inputs, 1024 digital outputs, 32 analogue inputs and 16 analogue outputs.



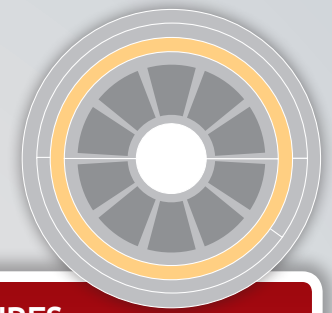
Preliminary specifications may change without notice



UK | USA | CHINA | INDIA | [WWW.TRIMOTION.COM](http://WWW.TRIMOTION.COM)



# UNIPLAY HMI



BRIGHT, HIGH-CONTRAST  
65536 COLOUR TFT DISPLAY

7" AND 10" VERSIONS

- ### FEATURES
- \* Single Point HMI Programming Inside *Motion Perfect v4*
  - \* Centralised Program / HMI screen Storage in a *Motion Perfect* Project
  - \* Easily Display any Controller Data Type and Graphics
  - \* No Need to Separately Program HMI Panel
  - \* 7" and 10" UNIPLAY Sealed Touch Panels Available
  - \* Ethernet Connection Reduces Wiring

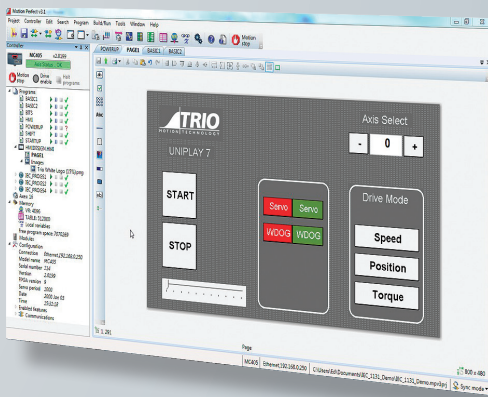
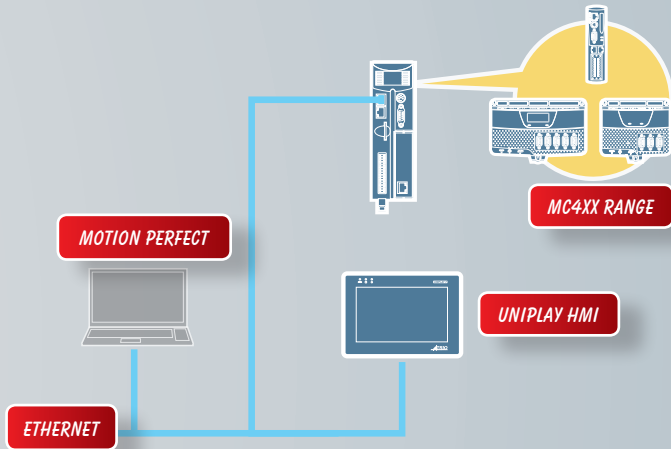


PANEL AND VESA MOUNTABLE

ETHERNET, COM, USB SD  
CARD PORTS

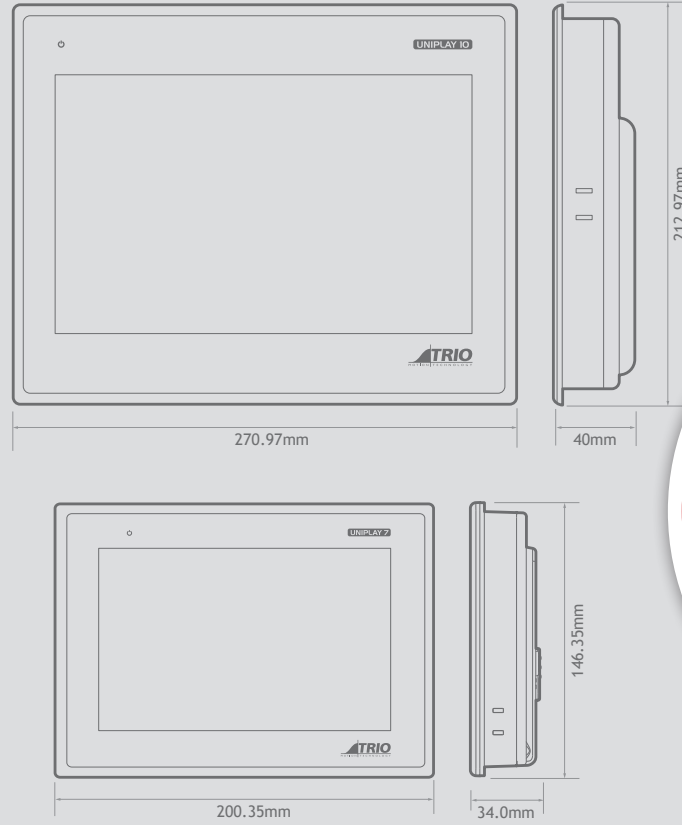
Trio's unique UNIPLAY HMI system is a revolutionary way to make operator interfaces better, easier and more secure! The UNIPLAY series boasts a 7" and 10" colour display.

The UNIPLAY range has built-in power isolation technology making it more reliable in noisy environments.



No additional software is required; UNIPLAY HMI's work with the Trio MC4+ *Motion Coordinator* range. *Motion Perfect* v4 is used to create operator HMI screens which are transferred to the UNIPLAY HMI by the *Motion Coordinator* at runtime.

#### OVERALL DIMENSIONS P843 AND P844



#### UNIPLAY PRODUCT OPTIONS

P843	P844
UNIPLAY 7"	UNIPLAY 10"

